

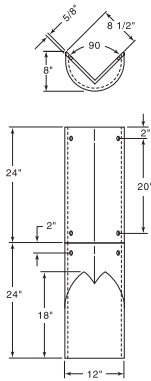
**R-4986-D and R-4986-DG**  
**Wheel Guard**

**Heavy Duty**

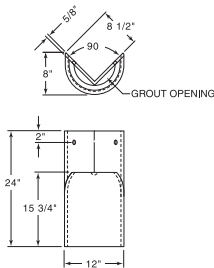
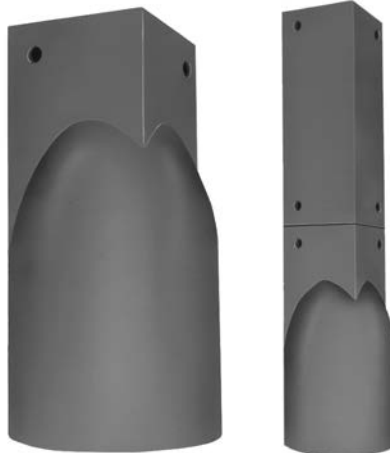
Wheel Guards are 3/4 round castings manufactured to be installed at garage door type entrances or outside corners of buildings. They provide protection from impact of vehicles that may be entering or traveling very close to these areas of the building. Anchor holes are furnished in the guards for bolting directly to the building. If the specification requires the Wheel Guards to be filled with grout, openings are provided to accommodate this (order **R-4986-DG**).

Guards are available with or without extensions.

Guard bases are normally imbedded about 1" in concrete to ensure proper base anchorage.



**Illustrating R-4986-D**



**Illustrating R-4986-DG**



DETECTABLE  
WARNING  
PLATES

8

**R-4987**  
**Stair Nosing**

**Heavy Duty**

